

i someone requested that i make a tutorial so here it is. it only takes a few minutes.i have photoshop 6 and 7; however i decided to use photoshop6 because i like it better and feel it is easier. but any photoshop will do  
*stock image from Hackerjoez and brian*  
look\_deep\_into\_my\_eyes.jpg

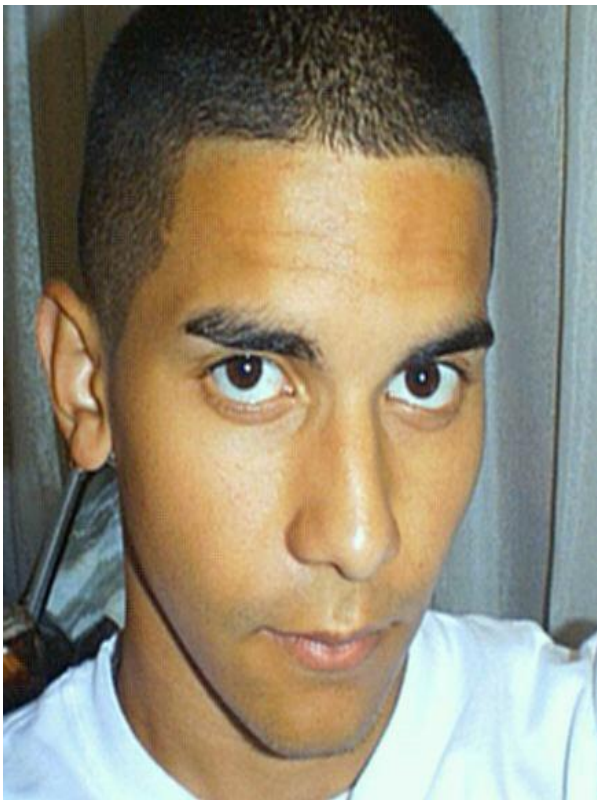
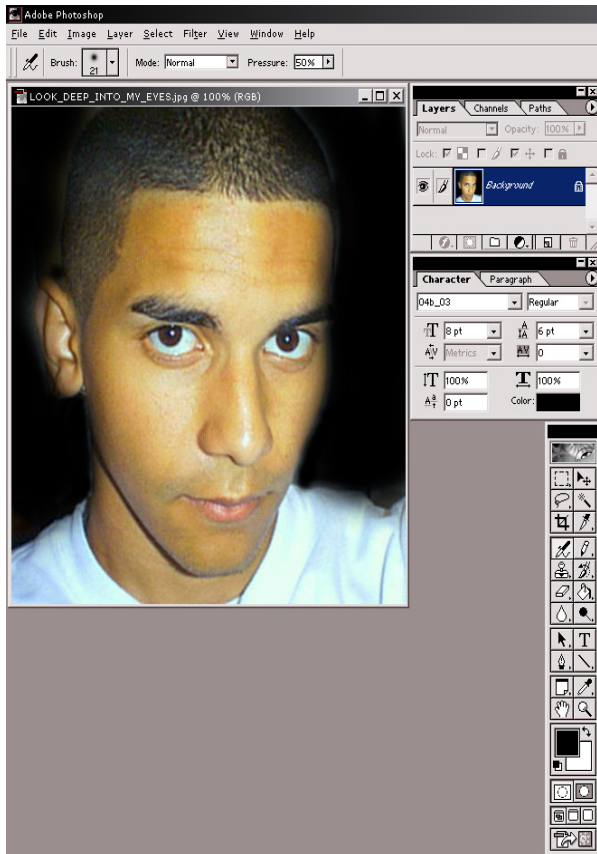


figure 1

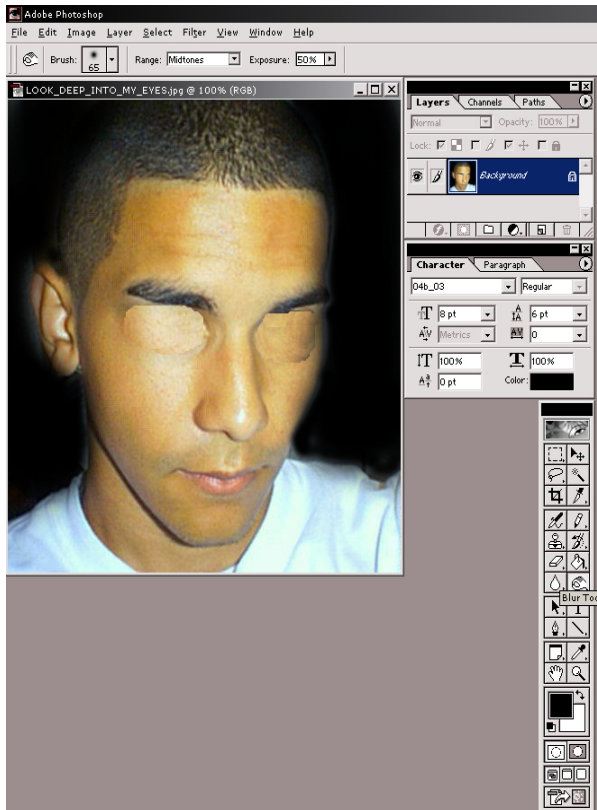


i am using HackerJoez face to do this and a camera.

step 1: load image (fig1.jpg located in this folder). it should look the first picture only a higher resolution. now that we have the image loaded we may move on to step 2.

step 2: we will start by coloring the background black. this is very eary. just set one color to black and select the airbrush tool and start brushing.

figure 2



step 3: when the background is done we can move on. next we will take out the eyes. to do this we will select the lasso tool and circle around an empty section of the face and select the drag tool and press alt + drag the section over the eye. Repeat this step for both eyes.

figure 3



step 4: next we will load the picture of the camera in this folder and select the lasso tool to copy the lense of the camera. (note: you can also use the circle marquee tool and copy it. however, i prefer the lasso tool.)

figure 4



step 5: next, we will paste the camera lense onto the first picture and scale it down. to do this we will go up to the toolbar and goto edit>transform>scale. we will then scale it to the size of the eye that was there at the beginning and drag it over to where the eye was. Repeat this step for both eyes. :- ) (i know that my example is not as good as the first.)

step 6: now you can add any textures or other details to it. in the final picture at the bottom i used flosaurus's peeling paint texture and the spook's brown metal texture. if you dont know how to do this and would like to then note me, this is just a tutorial for replacing body parts and crap :- )

LOOKDEEPINTOMYEYES.jpg



