

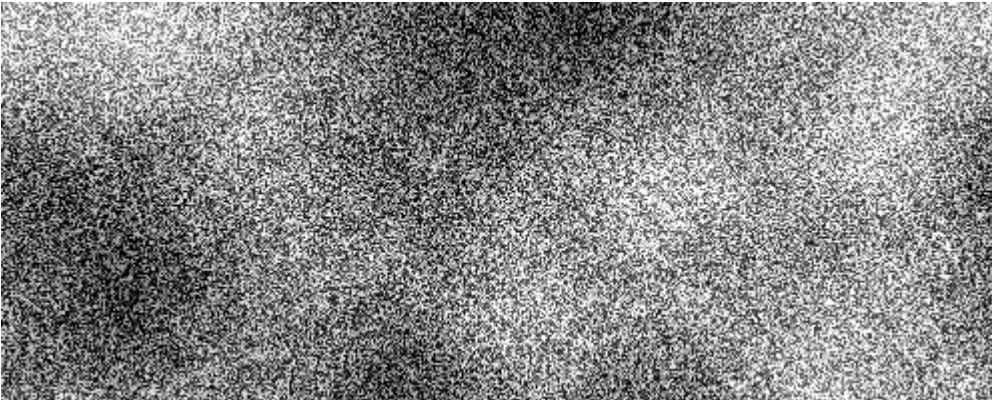


Step 1: Create a new document with your chosen background colour. Mine is black, 500x200.

Step 2: Make sure your colours are set to the default (press D) and run Clouds (Filter->Render->Clouds).



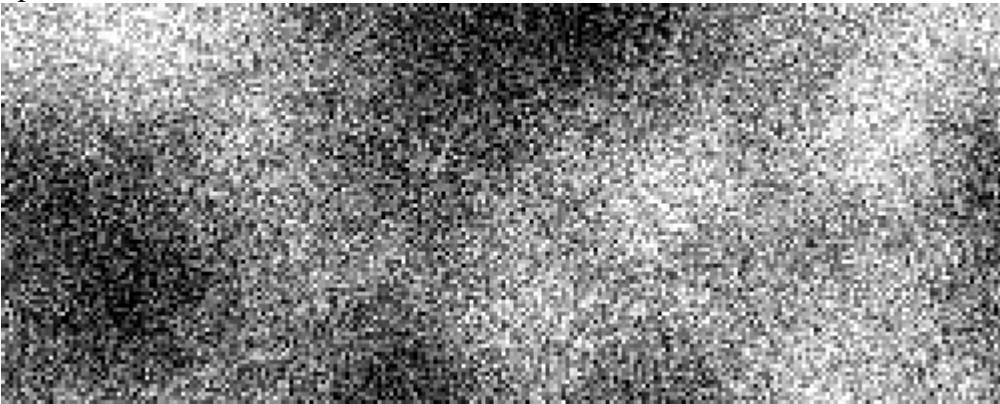
Step 3: Add noise (Filter->Noise->Add Noise). Set it to about 50% (monochrome). Distribution doesn't matter.



Step 4: Mosaic (Filter->Pixellate->Mosaic) with a size between 3 and 7px. This is one of the factors that really affects the outcome.



Step 5: Auto Levels (Image->Adjust->Auto Levels). You might want to crank the contrast up even further.



Step 6: Add your text. This is Courier in 133px (bold).



Step 7: Flatten the text layer and the background layer (ctrl+e on Windows).

Step 8: Apply Glowing Edges (Filters->Stylize->Glowing Edges). I used Edge Width 1, Brightness 12, and Smoothness 11. Play with Brightness and Smoothness to get the effect

you want.



Step 9: (for a stand-alone graphic) Go round the edges with a big black paintbrush.

